

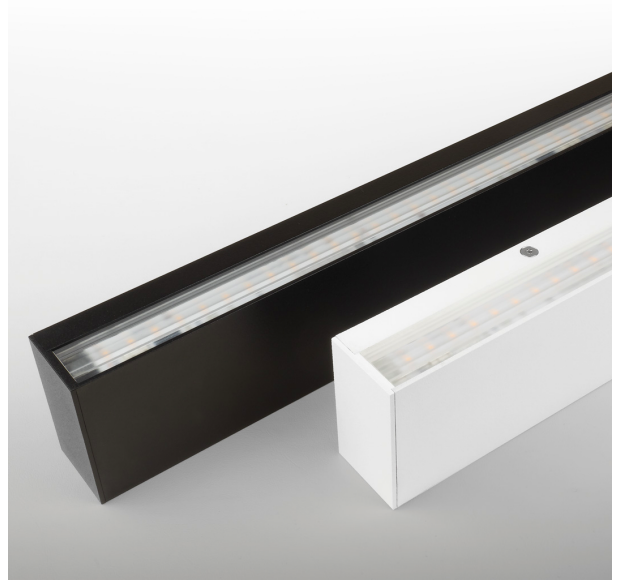
# Lifelight Linear 900

## PRODUCT DESCRIPTION

Medical/Healthcare lighting with a difference! Lifelight Linear 900 is changing the face of healthcare lighting offering an architecturally appealing yet fully functional overhead bed lighting solution.

- Luminaire length designed to match common bed widths within care environments.
- Small form factor – 70mm High x 41mm wide
- Double Asymmetric optics to eliminate the need for use of harsh downlights within care environs.
- Lumens exceeding 4745 lumens per metre
- Multiple finish options available.
- Fully integrated luminaire – no remote drivers.

Lifelight Linear 900 comprises of two main pieces, a main gear tray and an external housing. The gear tray comes preassembled and only requires connection of two 'Plug+Go' connectors once attachment to mounting surface has been completed



**MANUFACTURER** Intralux

**PRODUCT** Lifelight Linear 900

**PRODUCT TYPE** Wall

**MOUNTING TYPE** Wall Mount

**POWER** 6W, 15W, 35W

**LUMINOUS FLUX** 692lm, 2373lm, 4745lm

**CCT** 3000K, 4000K

**CRI** 90

**DISTRIBUTION** Asymmetric

**CONTROL** Fixed Output, DALI & Push Dim, 1-10V, Casambi

**IP RATING** 44

**SCDM** 3

**OPERATING TEMPERATURE** Max. 40°C

**LED LIFETIME** L80 B10 > 72,000

**WARRANTY** 5 Years

**MANUFACTURER'S WEBSITE**

<https://www.intralux.com/lifelightlinear900/>